



# Westmount Road

£565,000

**Huelin Homes**

LETTINGS | MANAGEMENT | SALES

01534 888 139 • [info@huelinhomes.com](mailto:info@huelinhomes.com)





## At a glance

-  2 Bedrooms
-  2 Bathrooms
-  1 Reception
-  1 Parking space

## Features

- Two Bedroom Apartment
- Two Bathroom
- Immaculate Condition
- Floor To Ceiling Windows
- On-Site Gym
- Designated Parking

**Huelin Homes**  
LETTINGS | MANAGEMENT | SALES

01534 888 139 • [info@huelinhomes.com](mailto:info@huelinhomes.com)

Set within the sought-after Westmount Development in St Helier, this impressive third-floor apartment offers modern coastal living with generous space and elegant design. Measuring approximately 72 sq. metres, the property features two spacious double bedrooms, including a primary suite with a private en-suite bathroom, and a second bedroom served by a stylish Jack-and-Jill bathroom.

A welcoming entrance hall with ample built-in storage leads to a well-designed utility cupboard, complete with a fitted washer/dryer. The heart of the home is the expansive open-plan lounge, kitchen, and dining area, a light-filled space enhanced by floor-to-ceiling windows and seamless access to a large wrap-around balcony. Here, you can enjoy alfresco dining or simply unwind while taking in the picturesque views towards Elizabeth Castle.

The sleek kitchen is fully equipped with high-quality integrated appliances, creating the perfect setting for both everyday living and entertaining. Completing the property is a secure private parking space, communal roof terrace and gym.

This is a superb opportunity to secure a beautifully appointed apartment in a prime location, ideal as a stylish home or a smart investment.

Share Transfer  
£279.43 per month



**Huelin Homes**  
LETTINGS | MANAGEMENT | SALES

01534 888 139 • [info@huelinhomes.com](mailto:info@huelinhomes.com)





# Huelin Homes

LETTINGS | MANAGEMENT | SALES

01534 888 139 • [info@huelinhomes.com](mailto:info@huelinhomes.com)





**Huelin Homes**  
LETTINGS | MANAGEMENT | SALES

01534 888 139 • [info@huelinhomes.com](mailto:info@huelinhomes.com)



**Huelin Homes**  
LETTINGS | MANAGEMENT | SALES

01534 888 139 • [info@huelinhomes.com](mailto:info@huelinhomes.com)





**Huelin Homes**  
LETTINGS | MANAGEMENT | SALES

01534 888 139 • [info@huelinhomes.com](mailto:info@huelinhomes.com)



**Huelin Homes**  
LETTINGS | MANAGEMENT | SALES

01534 888 139 • [info@huelinhomes.com](mailto:info@huelinhomes.com)





**Huelin Homes**

LETTINGS | MANAGEMENT | SALES

01534 888 139 • [info@huelinhomes.com](mailto:info@huelinhomes.com)

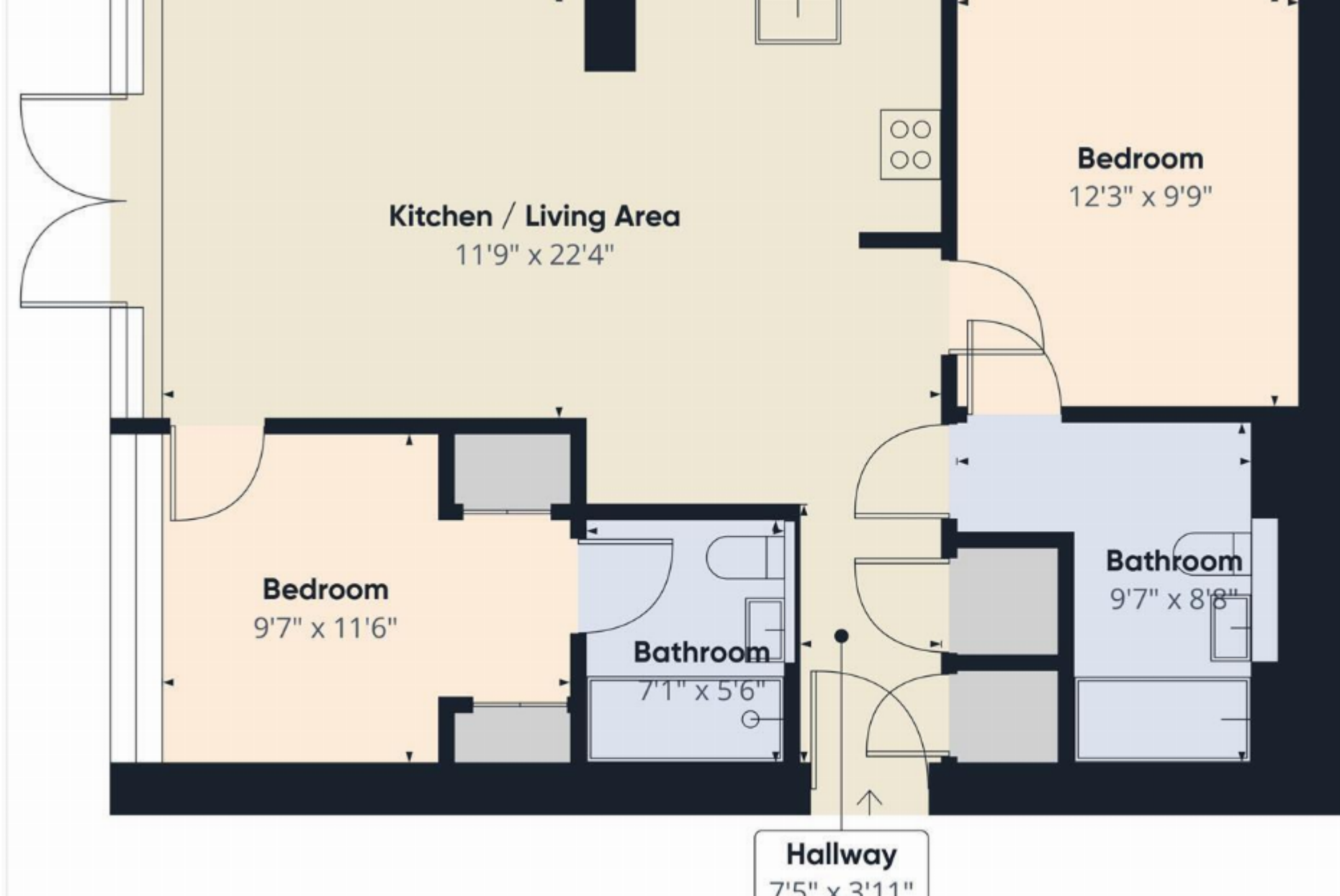




**Huelin Homes**  
LETTINGS | MANAGEMENT | SALES

01534 888 139 • [info@huelinhomes.com](mailto:info@huelinhomes.com)





Approximate total area<sup>(1)</sup>

716 ft<sup>2</sup>

(1) Excluding balconies and terraces

Calculations reference the RICS IPMS  
3<sup>d</sup> standard. Measurements are

**Huelin Homes**

LETTINGS | MANAGEMENT | SALES

01534 888 139 • [info@huelinhomes.com](mailto:info@huelinhomes.com)



**Huelin Homes**  
LETTINGS | MANAGEMENT | SALES

01534 888 139 • [info@huelinhomes.com](mailto:info@huelinhomes.com)





01534 888 139 • [info@huelinhomes.com](mailto:info@huelinhomes.com)