



La Route De Plemont, St. Ouen





£925,000



01534 888 139 • info@huelinhomes.com



At a glance

-  3 Bedrooms
-  1 Bathroom
-  2 Receptions
-  4 Parking spaces

Features

- Three Bedroom House
- Fantastic Project
- Spacious Accommodation
- Large Garden
- Plemont
- Parking & Garage



01534 888 139 · info@huelinhomes.com

Nestled in the heart of St Ouens, we present an extraordinary refurbishment house project that embodies the epitome of elegance and contemporary living. This remarkable property not only offers a prime location but also features exceptional amenities, including parking, a garage, and a generously sized garden.

The property is in need of refurbishment and would make an ideal project.

The property boasts substantial accommodation throughout, briefly comprising; a spacious entrance hall, living room, dining room, kitchen and separate utility, downstairs cloakroom and WC, three double bedrooms and a house bathroom.

The refurbishment house project in the heart of St Ouens presents an exceptional opportunity to own a remarkable residence in a prime location.

Freehold

Connected to mains water and septic tank and soakaway drainage.



01534 888 139 · info@huelinhomes.com



Huelin Homes
LETTINGS | MANAGEMENT | SALES

01534 888 139 • info@huelinhomes.com



Huelin Homes
LETTINGS | MANAGEMENT | SALES

01534 888 139 • info@huelinhomes.com



Huelin Homes

LETTINGS | MANAGEMENT | SALES

01534 888 139 • info@huelinhomes.com



Huelin Homes
LETTINGS | MANAGEMENT | SALES

01534 888 139 • info@huelinhomes.com



Huelin Homes

LETTINGS | MANAGEMENT | SALES

01534 888 139 • info@huelinhomes.com



Huelin Homes

LETTINGS | MANAGEMENT | SALES

01534 888 139 • info@huelinhomes.com



Huelin Homes

LETTINGS | MANAGEMENT | SALES

01534 888 139 • info@huelinhomes.com



Huelin Homes

LETTINGS | MANAGEMENT | SALES

01534 888 139 • info@huelinhomes.com



Huelin Homes
LETTINGS | MANAGEMENT | SALES

01534 888 139 • info@huelinhomes.com



Huelin Homes

LETTINGS | MANAGEMENT | SALES

01534 888 139 • info@huelinhomes.com



Huelin Homes
LETTINGS | MANAGEMENT | SALES

01534 888 139 • info@huelinhomes.com



Huelin Homes

LETTINGS | MANAGEMENT | SALES

01534 888 139 • info@huelinhomes.com



Huelin Homes
LETTINGS | MANAGEMENT | SALES

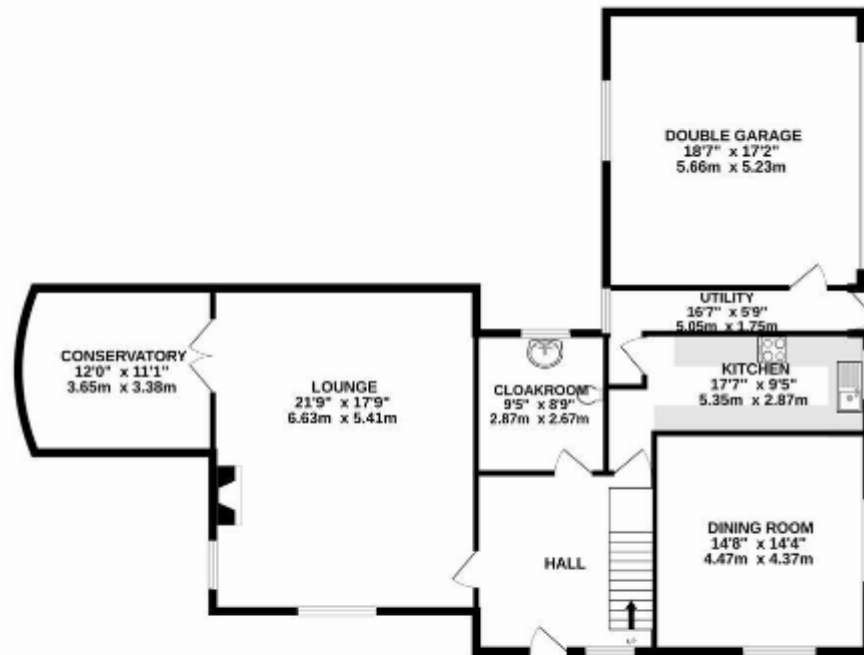
01534 888 139 • info@huelinhomes.com



Huelin Homes
LETTINGS | MANAGEMENT | SALES

01534 888 139 • info@huelinhomes.com

GROUND FLOOR
1452 sq.ft. (134.9 sq.m.) approx.



1ST FLOOR
968 sq.ft. (89.9 sq.m.) approx.



TOTAL FLOOR AREA: 2420 sq.ft. (224.8 sq.m.) approx.

Whilst every attempt has been made to ensure the accuracy of the floorplan contained here, measurements of doors, windows, rooms and any other items are approximate and no responsibility is taken for any error, omission or mis-statement. This plan is for illustrative purposes only and should be used as such by any prospective purchaser. The services, systems and appliances shown have not been tested and no guarantee as to their operability or efficiency can be given.
Made with Metropix ©2023



01534 888 139 · info@huelinhomes.com